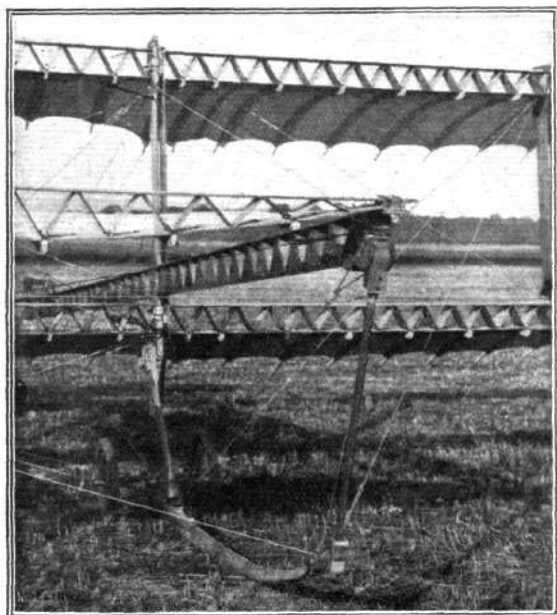
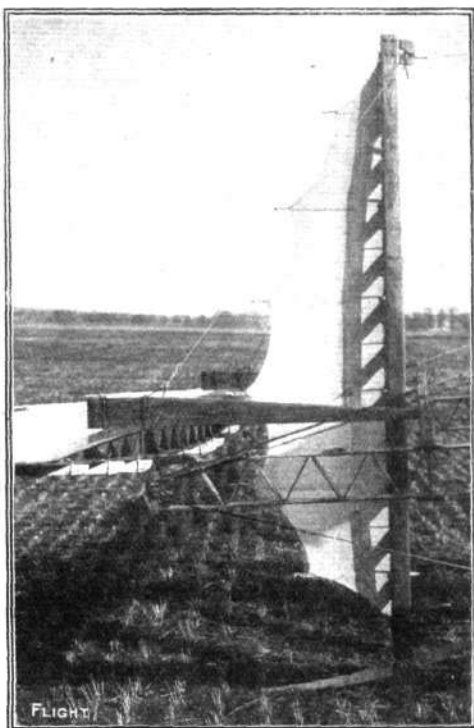


The landing chassis resembles that used on the Farman machine in many ways, but it has some useful original points. The skids are connected in front to the elevator outriggers by the chrome leather hinge-clips and wooden rods.



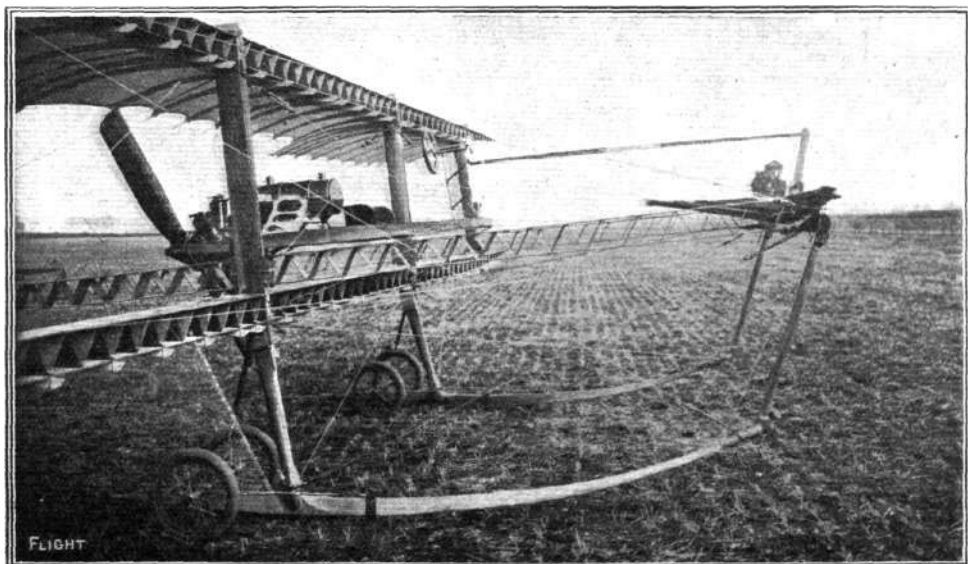
In this view of the Paulhan biplane the girder construction details of the front of the planes and the leather attachments employed for all joints can be seen.

The strength of the construction is incontestable, and the expenditure of thought is obvious, but as yet one knows nothing of the flying capabilities of the *appareil*.



Detail view of the wooden rudder on the new Paulhan biplane.

The rights for Great Britain and the Colonies are vested in Mr. Holt Thomas, and the appearance of the novel aeroplane on this side of the Channel will be awaited with great interest.



The skids, elevator, pilot's seat and steering-gear of the new Paulhan biplane are seen in this photograph.